



PLYmedia Inc.  
Brightcove (non-BEML) Integration Document



## Purpose

The goal of this document is to outline and explain the process for Brightcove integration with PLYmedia's PLYviewer, as well as provide step-by-step instructions for this procedure.

## Target Audience

IT personnel, Brightcove account managers/developers, webmasters and Flash developers within companies that utilize Flash player technology and who wish to enable PLYmedia's services in streaming video to the player on their websites.

## Table of Contents

Purpose .....	2
Target Audience.....	2
Table of Contents.....	2
Overview.....	3
Step-by-Step instructions: .....	3
1. Send PLYmedia Brightcove Player IDs: .....	3
2. Build the Plug-In URL:.....	4
3. Add the Plug-In: .....	4



## Overview

PLYmedia's player is a transparent Flash Player created and loaded for the purpose of displaying layers (PLYS) on top of a video. The integration process creates a link between the Brightcove Player on the hosting site and PLYmedia's Flash Player, and requires the following set of actions:

- Sending PLYmedia the Brightcove Player IDs utilized by the customer.
- Loading PLYmedia's transparent player (plyViewer.swf) on top of your Brightcove player using Brightcove Custom Plug-ins.

## Step-by-Step instructions:

### 1. Send PLYmedia Brightcove Player IDs:

In order for PLYmedia to server specific content to a specific video for a specific customer, PLYmedia utilizes Brightcove unique URL per video. A Brightcove unique URL has the following structure:

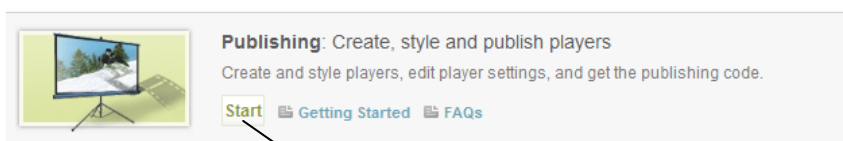
`http://link.brightcove.com/services/player/bcpid{PlayerID}?bctid={BrightcoveVideoID}`

PLYmedia uses the PlayerID value to assign the video to a customer, and the BrightcoveVideoID to assign content per video.

To enable extra features, PLYmedia must receive Player IDs in order to assign a SiteName per customer.

To get your Player ID:

- Go to the publishing section on your BrightCove account.



- Select your player from the list.

Players	Last Updated	Player ID
Single Video Player Video Player 496x412px	Jun 14 2010, 5:41PM	89358476001

**Single Video Player**  
Last Updated Jun 14 2010, 5:41PM

Default Viral Player  
Player ID 89358476001  
Status Active  
Template Video Player

- 

- Copy the Player ID

**Note:** It is important to send all Player IDs you are going to integrate to Gal Klein ([gal@plymedia.com](mailto:gal@plymedia.com))



## 2. Build the Plug-In URL:

The plug-in URL is:

<http://static.plymedia.com/players/default/bcsubplyplugin>

Loading the plug-in allows adding additional functionality to the PlyViewer by adding parameters as query strings:

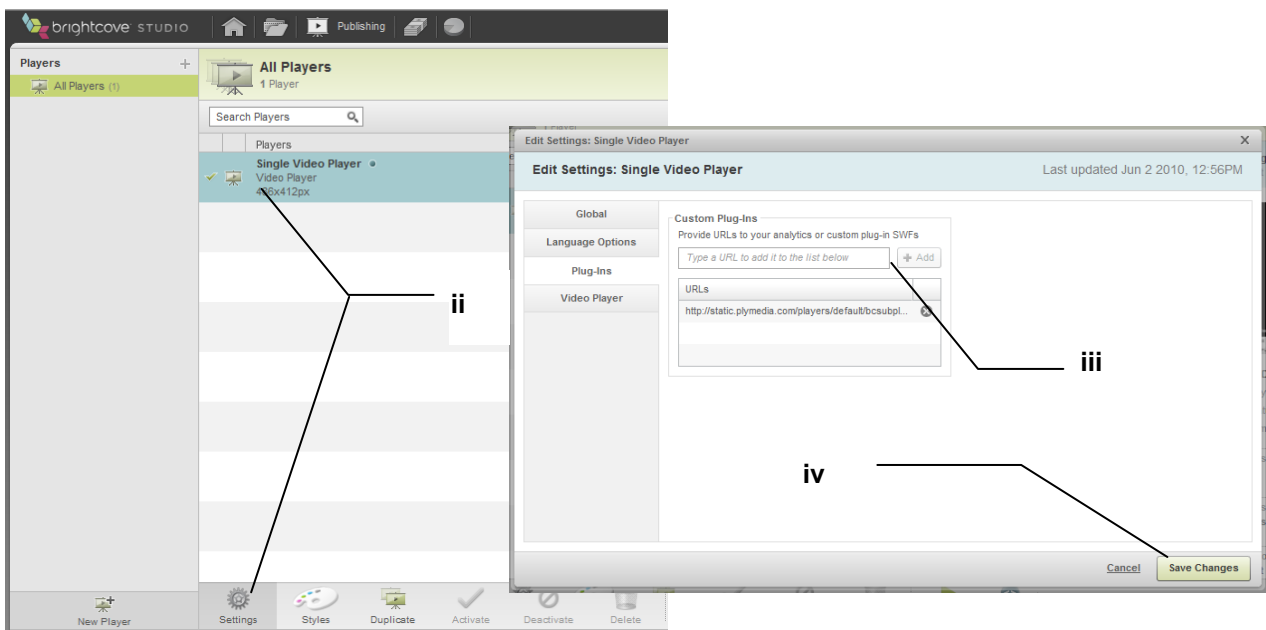
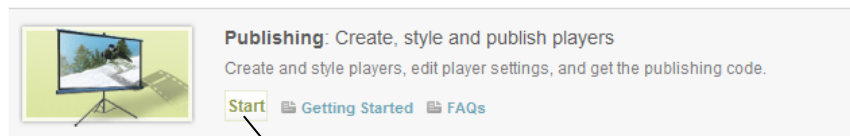
- i. subpos – allows positioning the caption on a vertical base where 0 is top and 100 is bottom (default is 100)
- ii. DefaultSubLang – allows setting the defaulted language, for a list of options please view: <http://content.plymedia.com/PLYServiceRest/Language/GetFullList>
- iii. skin – allows setting the Caption menu UI + positioning, options are: submenu-v1 (top right corner), submenu-v2 (bottom left corner), submenu-v3 (bottom right corner), submenu-topleft

So the plug-in URL could look like:

<http://static.plymedia.com/players/default/bcsubplyplugin?subpos=80&DefaultSubLang=eng&skin=submenu-topleft>

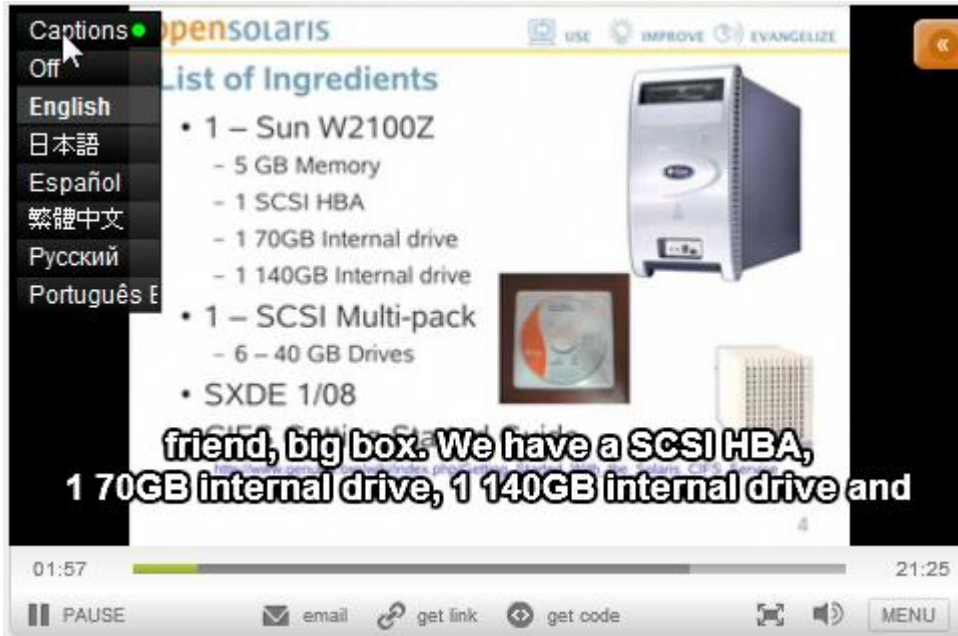
## 3. Add the Plug-In:

- v. Go to the publishing section on your BrightCove account.
- vi. Select your player and click 'Settings'
- vii. Select the Plug-Ins tab, enter the Plug-In URL and click 'Add'
- viii. Click 'Save Changes'



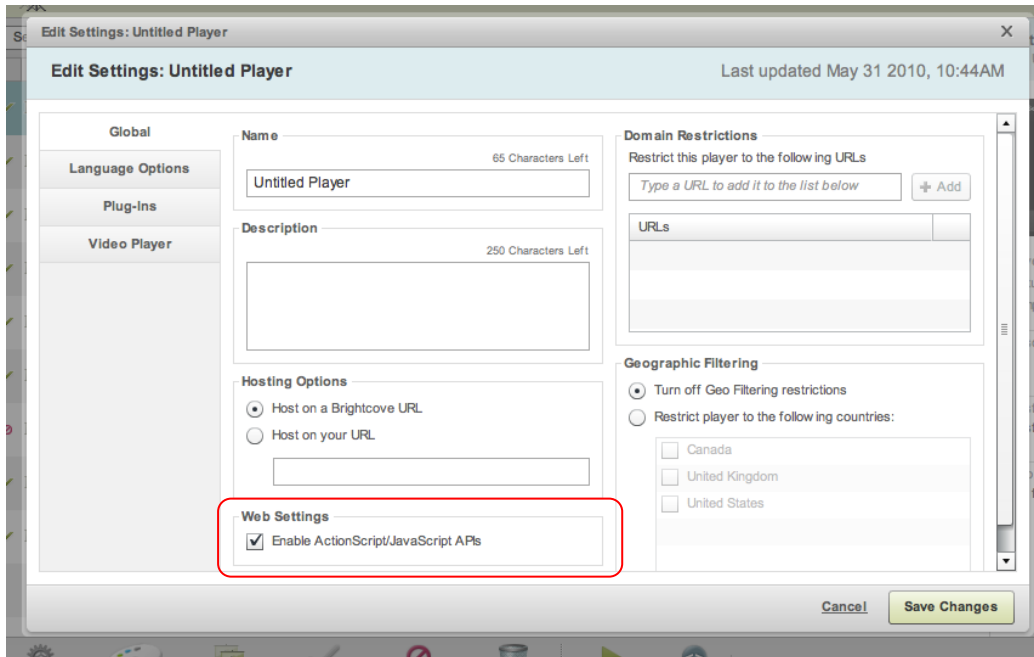


Once it is attached to your player the integration is done and you should have the Plymedia component running on your player.



**[!] Important**

Make sure you enable API calls in your player, otherwise the integration will have issues communicating with the media played.





In order to add the ability to create, save & modify PLYs on your site, and with any integration related questions you might have, please contact our technical department:

PLYmedia Inc.

[Support@PLYmedia.com](mailto:Support@PLYmedia.com)